

MAIN CHARACTERISTICS

DVB-T/H, DVB-T2, ATSC & ISDB-T standards
Transmitter, Transposer or Gap Filler configuration for each channel
Mounted in a standard 6U 19" rack cabinet
Possibility of redundant power supply
UHF band at 8MHz, 7MHz, 6MHz or 5MHz bandwidth
Up to 6 channels providing 5Wrms or up to 3 channels providing 10Wrms
Dynamic Adjustment of Output Power
Hot-plug modules
Central CONTROL UNIT integrated in the chassis
Remote Supervision included (optional SNMP agents)
Frequency agile for 5Wrms modules
Wide Dynamic input level range [-75dBm to 0dBm]
MER > 36dB @ 2Wrms // MER>33dB @ 5Wrms
Shoulders > 40dB @ 2Wrms // >36dB @ 5Wrms
Low Noise Figure < 4dB
Cancellation of Main Echo > 35dB (typically 40dB)
MER degradation negligible with Echo < 5dB
Image Channel rejection > 90dB
Non-essential radiations < -85dBc
Passive reserve (N+1) option
Power Supply 220Vac ±20%, 50Hz or 110Vac ±20%, 60Hz
Forced Ventilation cooling
Temperature 0°C to 45°C



BROADCASTING & TELECOMMUNICATIONS

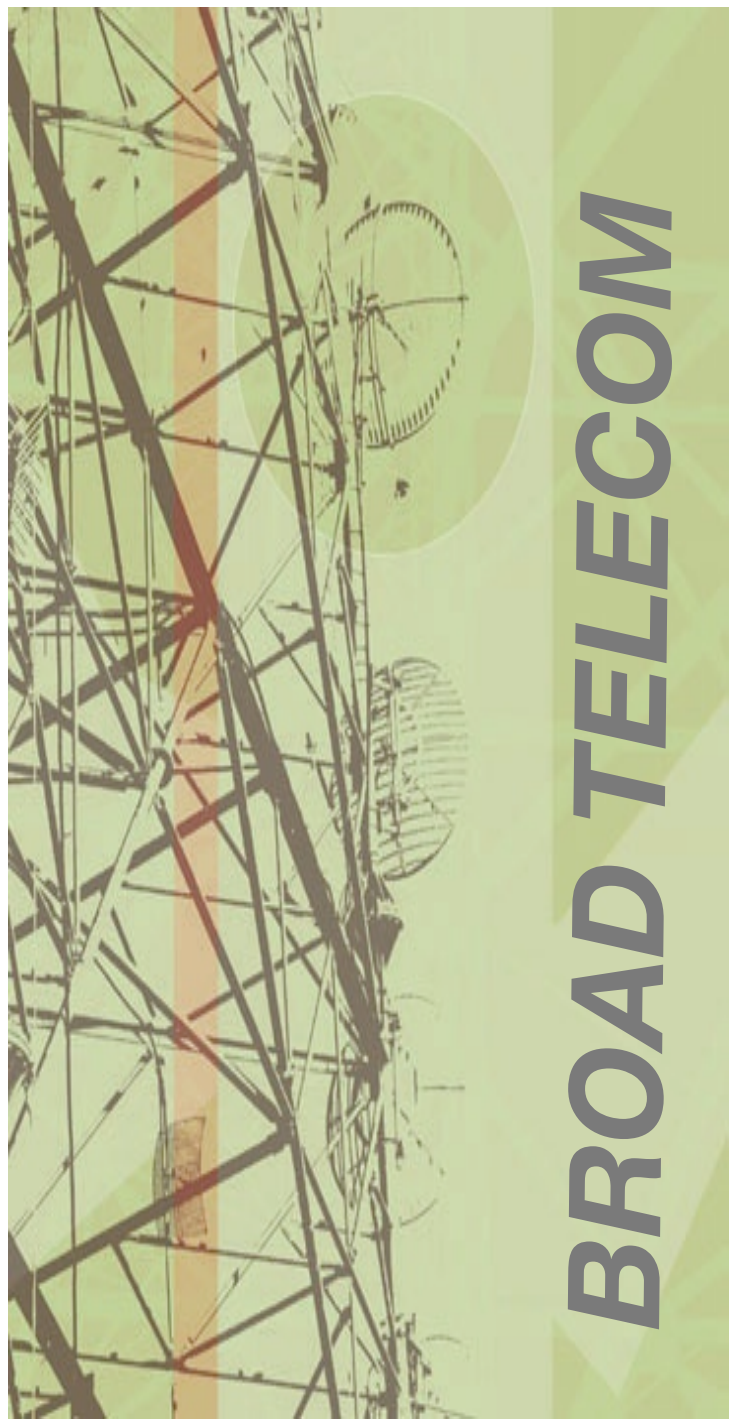
- TURN-KEY PROJECTS
- CAPABILITY & FLEXIBILITY
- AFTER SALES SERVICE
- PROXIMITY
- INVESTING ON FUTURE



BTESA (HEADQUARTERS)
 C/ Margarita Salas, 22
 Parque Leganes Tecnológico
 28918 Leganes (Madrid)
 SPAIN
 Tel.: +34 91 327 43 63
 Fax: +34 91 327 43 62
 Email: info@btesa.com
 Web: www.btesa.com
 Skype: btesav1

BTESA ASIA
 Jakarta, INDONESIA
 Tel.: +62 21 7919 3465
 Email: tudiyono@btesa.com

BTESA AMERICA
 Ciudad de Panamá, PANAMA
 Tel.: +507 235 8202
 Email: info@btesaamerica.com
 Web: www.btesaamerica.com



BROAD TELECOM S.A. - BTESA
INTRODUCING...

SUPER COMPACT TRANSMITTER & GAP FILLER



6ch Transmitter & Gap Filler up to 5Wrms

STANDARDS

DVB-T/H, DVB-T2, ISDB-T, ATSC

MULTIPLE CONFIGURATIONS

each channel can be:

TRANSMITTER / RE-TRANSMITTER
REPEATER / GAP FILLER

6 CHANNELS UP TO 5WRMS

OR

3 CHANNELS UP TO 10WRMS

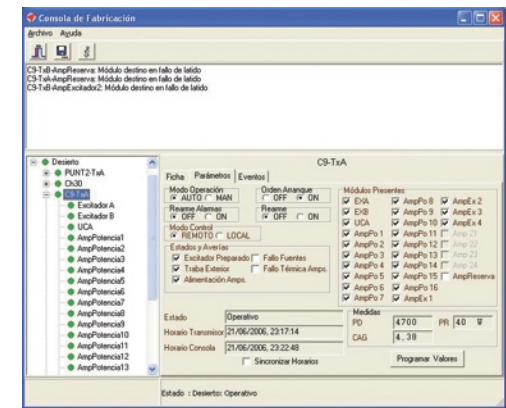
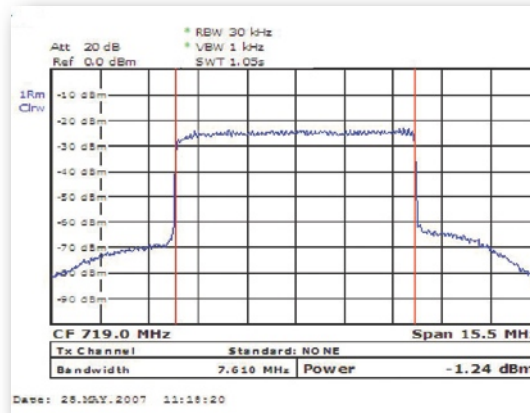


3ch Gap Filler up to 10Wrms

ECHO CANCELER

The adaptive Echo Canceler is able to cancel Echoes up to +18dB higher than the Input power. The minimum attenuation to main echo is more than 35dB (typically 40dB). That means that, for example, in case of having an Echo of 10dB over the signal at the input of the Gap Filler, the Echo at the output will be at least 25dB lower than the Output signal.

As a consequence, amplitude/frequency response is completely flat and provides additional Adjacent channel filtering without MER degradation.



REMOTE MONITORING & MANAGEMENT SYSTEM

Based on universal standards (PPP, TCP/IP, SNMP, http) it consists in a modular system from a single transmitter to a complete network providing access through web or graphical application (User Console) and allowing total access to all parameters and alarms of each module of the Gap Filler.

OUTDOOR
SOLUTION
WITH
WEATHER
PROOF
CABINET

