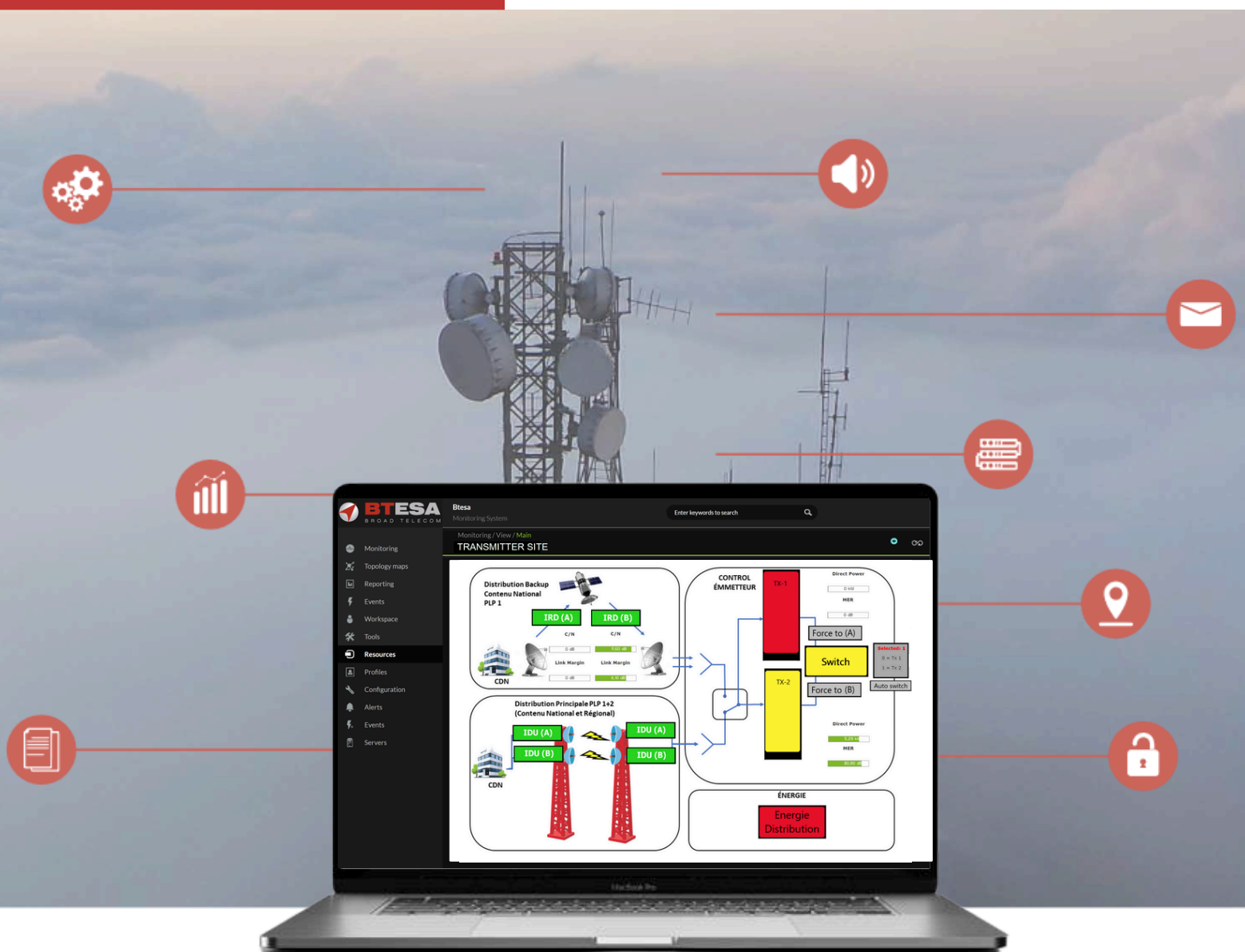


# BRAVE-NMS

Designed by broadcasters for broadcasters



## NETWORK MANAGEMENT SYSTEM

Remote monitoring of equipment for TV and radio operators

Our BRAVE-NMS (Broadcasters Real-time Analytics and Visualization Engine) system is the solution you need for monitoring and controlling all your broadcast equipment. Designed to meet the unique needs of broadcast operators it ensures seamless management and control of your broadcast network.



Locate any fault in less than 3 clicks



Supports equipment from any manufacturer



Custom reports & SLA reports



## Alarms notification

Sending alarms via SMS, email, etc.  
Includes Acoustic Alarm Console

## Remote Control

Brave NMS can monitor and control remotely your equipment both manually and automatically in response to alarms or events

## Solution for broadcast operators



Transmitters



Satellite & radiofrequency links



Headend equipment



UPS



Diesel generators



IT equipment  
(Servers, routers, switches, modems...)

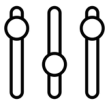


### Intuitive

It allows you to manage your entire network from our single application, making it easier the monitoring and control of the network and displaying all the information in a intuitive and visual way.

You can define multiple display windows on each dashboard with the most useful data to visually view critical information instantly.

### Combines management, monitoring, and maintenance into a single tool

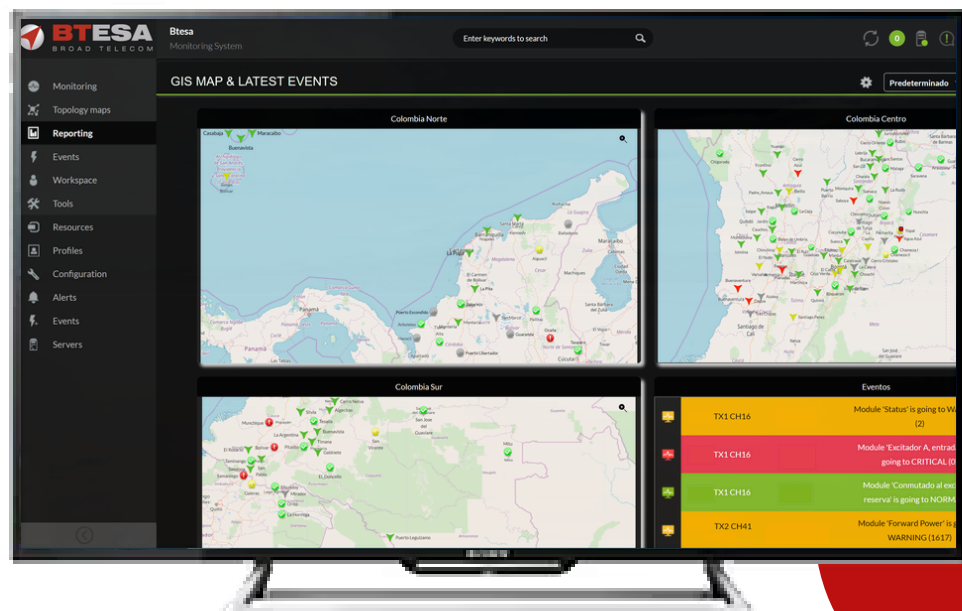


Based on Linux, the NMS software can be installed on a dedicated server, a virtualized one, or in dockers containers. It's scalable according to the number of measurements to be monitored.

It allows the integration of any type of equipment, whether it has standard protocols or through custom developments. Supports protocols such as SNMP, REST-API, XML, or Modbus, among others.

Compatible with all equipment, regardless of the manufacturer.

Multiple displays on a single screen: Different location maps, events





## Reports and graphics

Generates reports, or statistics to measure and ensure compliance with agreed SLAs (Service Level Agreements)



## Data base

Database with historical data. Automatic backup of customization settings.



## Geo-location

Geo-location and visualization at different levels



## Security

Security and access control

Multiple configurable display windows

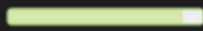
### TACTICAL VIEW

#### Report of State

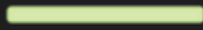
Server health



Monitor health



Module sanity



Alert level



#### Defined and fired alerts

3962

46

#### Monitors by status

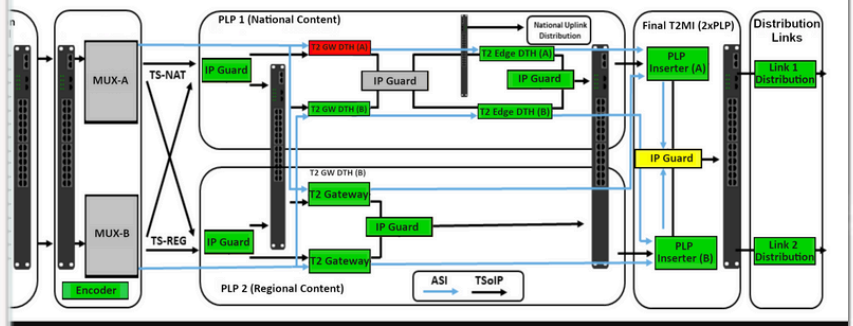
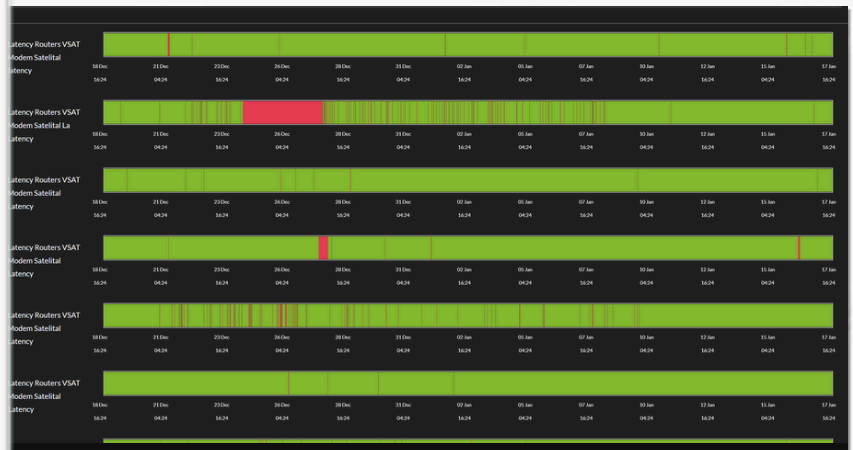
178

251

18501

1474

2



Geo-localization & Visualization



Multilevel alarm system

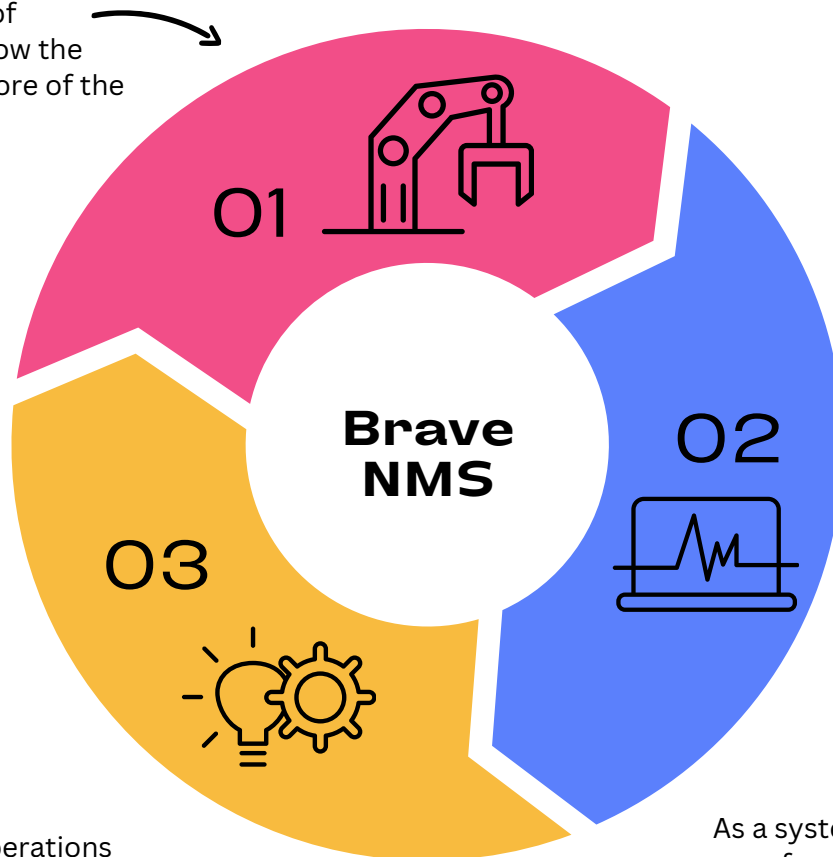


Custom reports

## Triple view of a broadcast network

### Manufacturer

As a manufacturer of transmitters, we know the electronics of the core of the broadcast network



### Operation's manager

As manager of operations and maintenance, we know the needs of the operator and how to respond quickly to problems

### Integrator

As a system integrator, capable of supplying projects which comprise all the equipment in the network, we know the operation of all the equipment (antennas, gensets, UPS, AVR, electrical boards, encoders towers, IRDs), gateways, ...)

From this global perspective **BTESA** has created its BRAVE NMS Management System, which is designed taking into account the problems of the equipment which can be integrated in a broadcast network and the specific needs of the operators of these networks.



## Advanced permission system

Unlimited user support. With an unlimited number of operators, each with specific permissions, even for partial access. A user can have access to view a certain group of equipment.



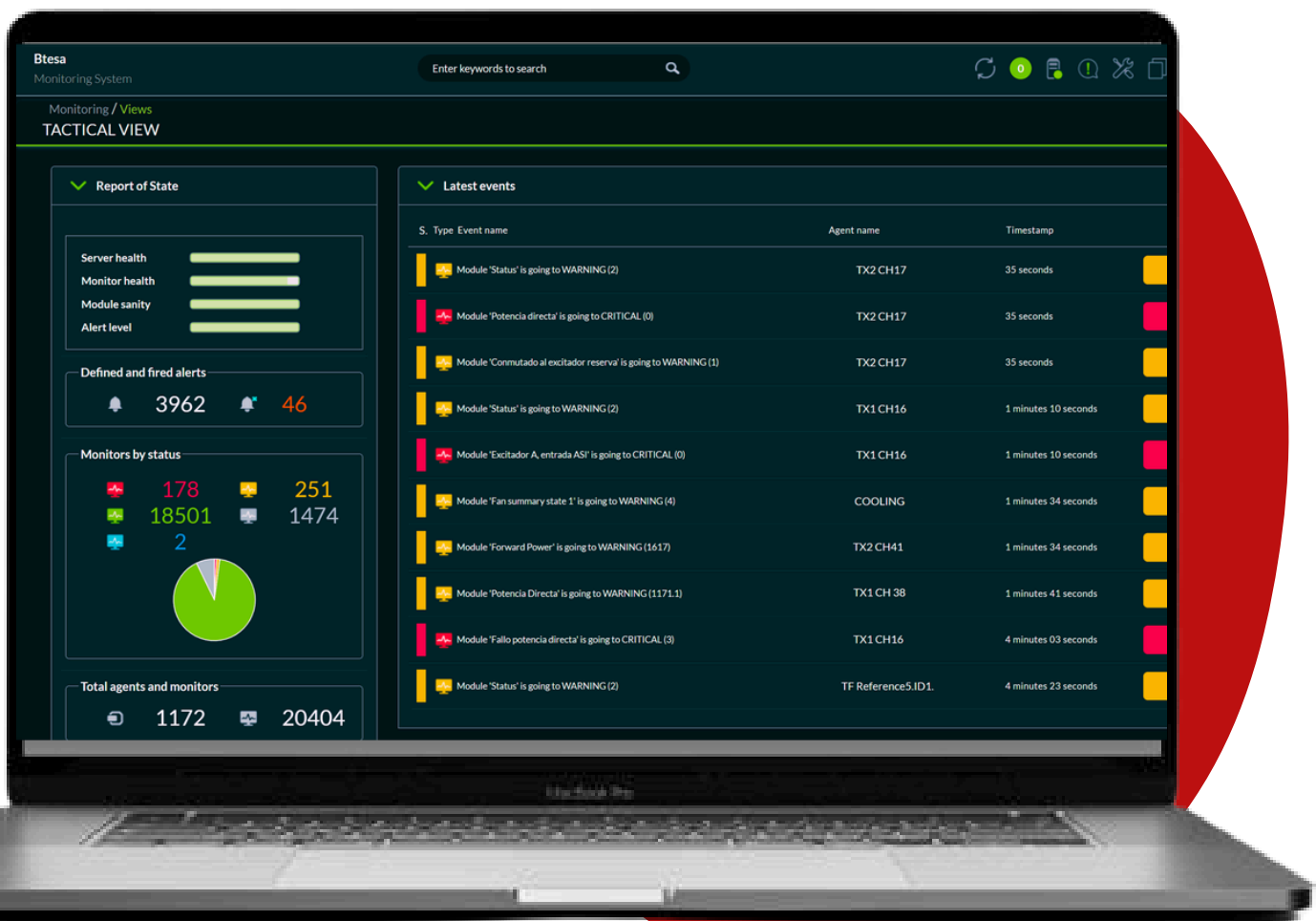
## Turnkey solution

Our engineers can design all customizations for your system, both visual configurations and also developing drivers to integrate new equipment. We look for the necessary technological solution to make your old equipment compatible with our system.



## Friendly web browser interface

Intuitive window designs to make interaction easy.



Tactical view - Visualize the status of your network at a glance

